



Build Your Own Program

Menu

Custom Experiences to Meet Your Learning Goals



Chincoteague Bay
Field Station



BOOKING YOUR PROGRAM

If our current program offerings don't fit your schedule or meet all of your needs, you can build your own program with us! You can tailor the number of days, classes, and lessons to fit your learning goals, curriculum requirements, and budget. Note: CBFS requires at least 1 adult per 12 children on program.

Use the step-by-step guide below to determine program length, choose housing, and select your amenities and classes to calculate the total cost for your group.

STEP 1: CHOOSE YOUR LENGTH OF STAY AND DATES

Custom programs can be anywhere from half day to multi-day excursions. We are happy to teach one class as a supplement to another trip or host your group for a week. As you're considering your program, please keep multiple potential dates in mind or a range of dates. Availability of dates is dependent upon field station resources and educator schedules.

****Please note that CBFS charges an Administration Fee of \$50 per day.****

STEP 2: CONSIDER HOUSING AND MEAL OPTIONS

Residence Hall

Our dormitories are suite-style with 4 rooms and 2 bathrooms to a suite . Each room contains 2 or 4 twin size beds. Each suite houses up to 14 people.....\$32 per person per night
Linens are available upon request with at least two weeks advance notice.....\$15 per person



Camping

If you want to reduce the cost of housing, but still stay on campus to maximize your learning, consider pitching your tents and camping out next to our campus fire ring. We will provide a key to one of our suites for bathroom access. Please note that space for camping is limited. Group size cannot exceed 40 people if utilizing our camping space.

\$80/night

Meals

Meals are prepared on site and served cafeteria-style in our modern dining hall. Breakfast spans an array of fruits, hot and cold cereals, meats, breads/biscuits, pancakes and eggs for your choosing. Lunches and dinners vary. A salad bar is available at both lunch and dinner.

Groups are not required to eat on campus and may schedule as many or as few meals as preferred.

Breakfast	\$11.50/person
(Minimum charge of \$100/group)	
Lunch	\$14.25/person
(Minimum charge of \$140/group)	
Dinner	\$16.25/person
(Minimum charge of \$160/group)	

Allergies and Dietary Restrictions

Our cafeteria can accommodate most allergies and food restrictions, including vegetarian or vegan diets, with advance notice. Please plan to send any and all dietary restrictions at least 2 weeks prior to your visit. In some circumstances or if an allergy is severe, we may advise participants to bring supplemental food.

It is the participant's responsibility to notify dining services staff of their allergies during meal times so that they may be given appropriate meals.

STEP 3: CHOOSE YOUR CLASSES AND ADDITIONAL EXPERIENCES

Fill your schedule with a combination of traditional classes and/or additional field experience options!

Traditional classes are approximately 3 hours long and fit into morning or afternoon blocks unless otherwise specified. All Traditional classes include a field experience. Traditional class options can be found starting on page 5.

Class prices are listed for groups (children and adults) of 1-14 or 15-23 participants. Groups of 1-14 will travel via 15 passenger vans, while groups of 15-23 will utilize CBFS's school buses. If your group is larger than 23, participants will need to be divided into smaller groups participating in concurrent sessions. Pricing for traditional classes is listed at the beginning of page 5.

CBFS also offers additional field experiences and options which don't fit into our traditional class model. Please check each experience for what time blocks it can fill. These experiences allow participants to take part in activities unique to our ecosystem (kayaking and biking), supplement their traditional classes (organism lab or dissection), or facilitate team bonding and camaraderie (campfire and team building). Additional field experiences and options are priced individually.

STEP 4: BOOKING

Once you have a plan in mind for your program, please contact a member of the education staff to discuss and ask any questions:

Anne Self – Education Director
757-824-5636 x110

Lexi Overdiek - Program Coordinator
757-824-5636 x106

Molly Sutton - Assistant Program Coordinator
757-824-5636 x106

Claire Teachey - Assistant Coordinator for School Programs
757-824-5636 x109

adultandfamily@cbfieldstation.org

When you are ready to book your final program, please fill out the Custom Program Booking Form found on our website or sent to you by a staff member. We strongly encourage you to speak with a member of CBFS staff before submitting a booking form.

PAYMENT SCHEDULE AND CANCELLATIONS

A 10% non-refundable deposit is required to secure your dates. Upon payment of the deposit an invoice will be generated based on tentative program numbers.

50% of the total payment is due 30 days prior to the program start date. Payment in full is due 2 weeks prior to your program start date.

Final participant numbers are due 3 weeks before the program start date. Refunds will not be issued for any registered participants who cancel after this point unless proof can be provided that the cancellation was for medical reasons.

CANCELLATION POLICY

Programs cancelled in writing more than 30 days prior to the program start date will receive a full refund, less the 10% deposit.

Programs cancelled between 30 and 14 days prior to the program start date forfeit their 50% deposit with any additional payments refunded.

Refunds will not be issued to programs cancelled within 14 days of program start date.

TRADITIONAL CLASSES

Class prices are listed for all children and adults in groups up to 14 people or up to 23 people. We require 1 field station educator per group of 23. For groups larger than 23, we ask that you divide your students into smaller groups participating in concurrent classes.

All traditional classes include a field component and are available for AM or PM class sessions.

Groups of 1-14\$275

Groups of 15-23\$325

Barrier Island & Dune Ecology

Learn how barrier islands form and change and why beach life isn't as easy as you might think. Head out to the field to build your very own dune system and learn what makes this ever-changing ecosystem so unique!



Intertidal Studies

Discover how the sun, moon, and earth create the tides and how life manages to survive in this extreme environment. Then head out into the field on Assateague Island to collect the organisms that call the intertidal zone home!

Wetland Ecology

Dive right in to discover what makes a saltmarsh so important and just who lives in this productive ecosystem. After investigating in the classroom, head into the field to take the "productivity plunge" into the mud pit!



Maritime Forest

Hike into the woods for a look at what makes up a forest! Investigate the maritime forest from top to bottom, identifying trees, animal inhabitants, & their survival tactics in this unique environment.

CLASSES CONTINUED...



Ornithology

Learn how to identify birds by body shape, coloration, beak shape, and habitat. In the field, visit a variety of ecosystems with binoculars in hand to see how many birds you can identify.

Fish Biology

Learn all about the anatomy and adaptations of different fish by getting a closer look at our local fish species. Collect fish using seine nets, dip nets, and other sampling methods.



Marine Invertebrates

Dig deeper into the wild & wacky world of invertebrates. Use a variety of sampling methods to collect as many different organisms as you can and learn about the common Phyla in our area.

Coastal Botany

Dig deeper into the world of coastal plants. Get an up-close look at coastal plants and understand why they are so important to their ecosystems. Hone your plant identification skills as you travel to visit local ecosystems and the plants that reside there!



Nocturnal Adaptations Hike

Test your night vision during this dark hike. Acquaint yourselves with nocturnal animals and the adaptations that make them successful as creatures of the night.

****only offered in the Evening****

CLASSES CONTINUED...

Soil Science

Our soil is essential to the health of our ecosystem and maintaining water quality. In this class, get up close and personal with the world beneath your feet. Learn all about soil makeup and horizons, then head out into the field to collect samples and test our local soils to draw conclusions about ecosystem health.



Herpetology

Learn all about the similarities and differences between reptiles and amphibians. Then head out into the field to observe them in their natural habitats, and hopefully collect some for observation and study.



ADDITIONAL OPTIONS AND EXPERIENCES

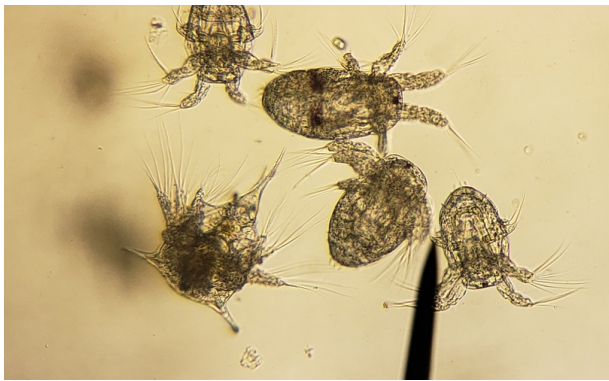
The following experiences allow participants to take part in activities that supplement their traditional class selections, facilitate team bonding and camaraderie, or immerse participants further into the culture and ecosystems unique to the Mid-Atlantic region!

The following field experiences and opportunities are priced specific to each option.

Oceanography Research Cruise

Climb aboard a vessel to hone your oceanographic skills by testing water quality, gathering data, & observing organisms caught in our trawl net.

AM/PM (1-18 participants)\$600
Additional fee per person over 18 participants.....\$35



Micro & Macro Organism Lab

Get up close and personal with organisms of the Chincoteague Bay. Use field guides, dichotomous keys, & microscopes to examine and identify fish, invertebrates, zooplankton, and phytoplankton.

AM/PM/EVE classroom only\$200

Kayaking

Learn to kayak and paddle your way through salt marshes or cypress swamps while learning all about these local tidal habitats. Must be at least 10 years old. EVE session available seasonally based on sunset times.

AM/PM/EVE half day field experience (1-14 participants)...\$380
Full day field experience (1-14 participants).....\$760



Organism Dissection

Delve deeper into biology & explore internal anatomy through dissection.

Squids are the default dissection organism. Sharks are available at an additional cost.

AM/PM/EVE squid dissection.....\$275
shark (additional fee per person)\$5

ADDITIONAL OPTIONS AND EXPERIENCES CONTINUED...

Campfire



What better way to wrap up the day's adventures than with a good ol' campfire? Let our staff put on a show (or just serve the s'mores) and enjoy. PLEASE NOTE: Groups must provide their own wood that is sourced locally or purchase it from CBFS. No out-of-state wood is permitted.

EVE staff led songs, skits, & s'mores\$75
 EVE chaperone ledno cost
 Bag of wood.....\$10

Aquarium Maintenance and Animal Husbandry

Students will dive right into tank maintenance here at the Field Station! They will perform tests and assess water quality, make decisions on how to improve water quality in tanks, and learn the importance of proper animal husbandry. The class will end with the students debating the ethics of keeping live animals in aquariums.



AM/PM/EVE Classroom Only.....\$200



Crabbing

Learn the art of crabbing as you get hands-on with the Mid-Atlantic's famous Blue Crabs.

AM/PM local crabbing spot\$200

Team Building

Does your troop, club, or group need to learn to work together? With our series of games and activities, we can have your team functioning in top form and reflecting on how to improve even more.



AM/PM/EVE campus only (1-23)\$200



Custom Class

Don't see what you're looking for? CBFS has the ability to design a custom class to suit a certain topic or set of requirements. We are happy to work to build a program that works best for you.

AM/PM Classroom Only.....\$225
 AM/PM field experience.....\$295

CUSTOM SCOUT PROGRAMS

Scout troops have the option to choose a classic custom program or to choose a badging program. Custom badging programs for scouts will include a combination of traditional classes and experiences, plus specialized classes designed to satisfy badge requirements. Badging programs will also include access to a certified merit badge counselor through CBFS. Sample schedules can be found on the Scouts page of the CBFS website.

An extra fee of \$50 will be required for badging programs to account for specialized programming and badging efforts by merit badge counselors.

Chincoteague Bay Field Station offers the necessary knowledge and skills to complete some or all requirements for the following Boy Scout merit badges:

Nature*
Astronomy
Bird Study*
Oceanography*
Reptile and Amphibian Study
Environmental Science*

*Denotes merit badges that can be completed in one weekend and approved by counselors employed by CBFS.

Chincoteague Bay Field Station offers the necessary knowledge and skills to assist with some Girl Scout activities in the following categories:

Outdoors
STEM
Journey Series



SAMPLE CUSTOM PROGRAM

Below is an example of a 4 day schedule and a walk-through of the cost it would entail for 14 people including adults.

** This is just an example. Price will change depending on your group size and your class and amenity choices.**

	Day 1	Day 2	Day 3	Day 4
A M		Breakfast at 8:00 in Dining Hall		
		Intertidal Studies	Wetland Ecology	Check-Out
P M		Lunch at 12:00PM in Dining Hall		
	Check-In	Oceanography Research Cruise	Barrier Island and Dune Ecology	
E V E	Dinner at 5:15PM in Dining Hall			
	Welcome Nocturnal Adaptations Hike	Micro and Macro Organism Lab	Campfire	

Classes and Experiences

Day 1	
EVE- Nocturnal Adaptations Hike.....	\$275.00
Day 2	
AM- Intertidal Studies (with field experience)	\$275.00
PM- Oceanography Research Cruise	\$600.00
EVE- Micro & Macro Organism Lab (on campus)	\$200.00
Day 3	
AM- Wetland Ecology (with field experience)	\$275.00
PM- Barrier Island & Dune Ecology (with field experience)	\$275.00
EVE- Campfire (staff led songs, skits, & s'mores)	\$75.00

Residence Hall Suite

(3 nights at \$32/person/night)\$1344.00

Meals

Breakfast (3 meals for 14 people at \$11.50/person)	\$483.00
Lunch (2 meals for 14 people at \$14.25/person)	\$399.00
Dinner (3 meals for 14 people at \$16.25/person)	\$682.50

Additional Fees

Custom Programs Administrative Fee (4 days at \$50/day)\$200.00

GROUP TOTAL\$5,083.50

PER PERSON TOTAL (14 PEOPLE)\$363.11

CONTACT US

IF YOU ARE INTERESTED IN...

CONTACT...

Planning a School Field Trip	spsc@cbfieldstation.org
Road Scholar	adultandfamily@cbfieldstation.org
College Summer Courses	ur@cbfieldstation.org
Family Camps	adultandfamily@cbfieldstation.org
Custom Programs	adultandfamily@cbfieldstation.org
College Field Trips	ur@cbfieldstation.org
Facility Rentals	educationdirector@cbfieldstation.org
Homeschool Programs	adultandfamily@cbfieldstation.org
Scout Programs	adultandfamily@cbfieldstation.org
Day or Residential Summer Camps	spsc@cbfieldstation.org
General Information	info@cbfieldstation.org

